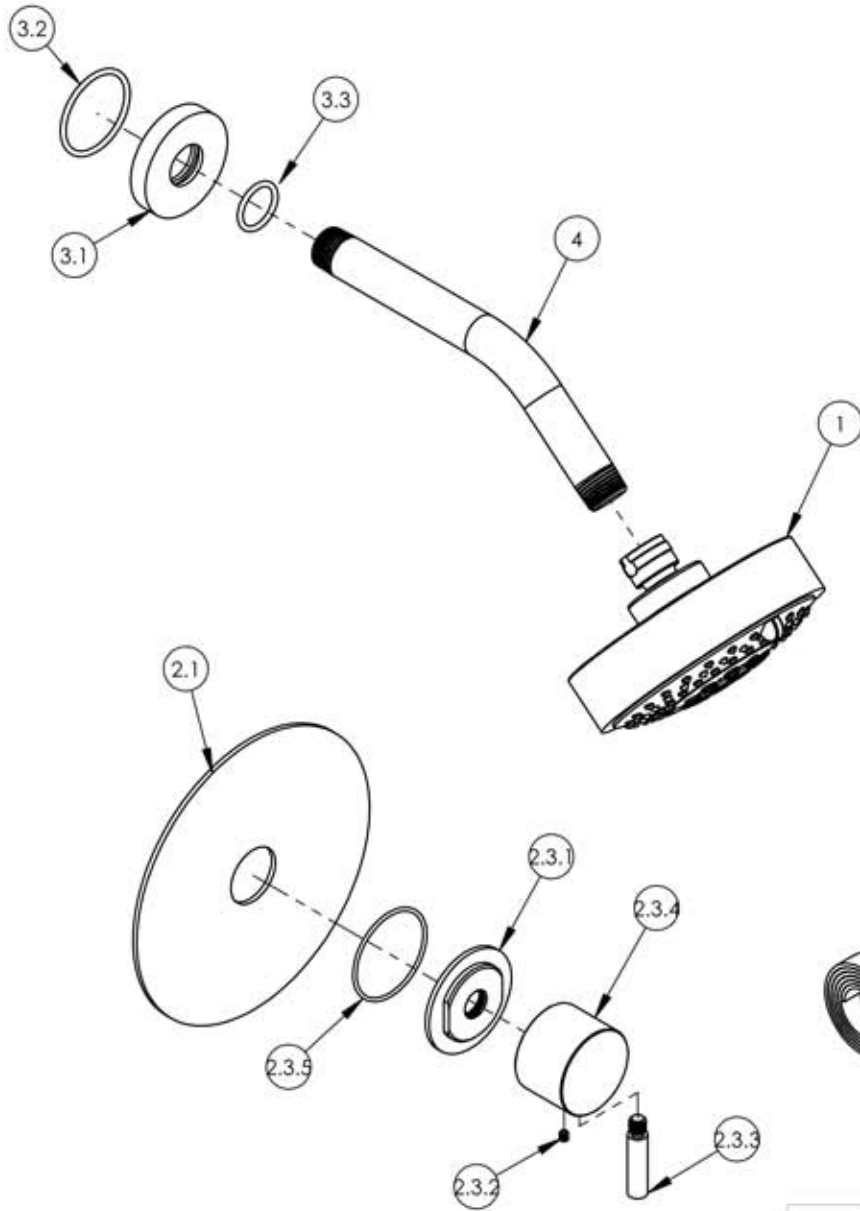


A

B

C

D



ITEM NO.	PART NUMBER	DESCRIPTION	QTY.
1	3-371/00	SHOWER HEAD, MULTI-FUNCTION, COMTEMPORARY	1
2	4-183/00	PRESSURE BALANCE SHOWER PLATE & HANDLE TRIM, LEVER HDL, BASIC II SERIES	1
2.1	10443/00	TRIM PLATE 6" ROUND, BASIC II	1
2.2	90537	1/16" TAPE FOR WALL PLATE	1
2.3	3-339/00	SUB ASSY, LEVER HANDLE, BASIC II	1
2.3.1	11164/00	ESCUTCHEON BASE, CONTEMP, BASIC II	1
2.3.2	92008	SET SCREW, CUP POINT 8-32	1
2.3.3	11168/00	HANDLE LEVER, CONTEMP, BASIC II	1
2.3.4	11167/00	BASE HANDLE, CONTEMP, BASIC II	1
2.3.5	90031	O-RING, 1-3/4"ID X 1-7/8"OD X 1/16"THK, AS-568-031	1
3	811/00	SHOWER FLANGE, CONTEMPORARY, ROUND	1
3.1	P16019/00	BASE SHOWER FLANGE, BASIC SERIES	1
3.2	90129	O-RING, 1-9/16"ID X 3/32THK, AS-568-129	1
3.3	90117	O-RING, 7/8"ID X 33/32THK., AS-568-117	1
4	P16008/00	SHOWER ARM (8 INCH)	1

ZONE	REV.	DESCRIPTION	DATE	APPROVED
REVISIONS				

1261 LOGAN AVENUE COSTA MESA, CALIFORNIA 92626 PHONE: 714.361.4800 FAX: 714.617.3120		<b>PHYLTRICH®</b> Defining Luxury Since 1959	<b>PROPRIETARY AND CONFIDENTIAL</b> THE INFORMATION CONTAINED IN THIS DRAWING IS THE SOLE PROPERTY OF RJS MANUFACTURING. ANY REPRODUCTION IN PART OR AS A WHOLE WITHOUT THE WRITTEN PERMISSION OF RJS MANUFACTURING IS PROHIBITED.
---	--	---	---

-	-	INTERPRET GEOMETRIC DIMENSIONING & TOLERANCING IN ACCORDANCE WITH ASME Y14.5-2009 & ASME Y14.41-2003 STANDARDS, UNLESS OTHERWISE SPECIFIED. DIMENSIONS ARE IN INCHES. TOLERANCES ARE:		
NEXT ASSY	USED ON	FRACTIONS ±1/64"	DECIMALS X.X: ±.1 X.XX: ±.01 X.XXX: ±.005	ANGULAR ±.5°
APPLICATION		MATERIAL	NAME	DATE
FINISH		DRAWN	FME	11/11/2015
DO NOT SCALE DRAWING		CHECKED	LLO	

PRESSURE BALANCE SHOWER SET, LEVER HANDLE, BASIC II SERIES

SIZE	ASM/PRT NO.	REV
<b>A</b>	230-24/00	-
SCALE: 1:3.5	WEIGHT: lbs.	SHEET 1 OF 2

5

4

3

2

1